



FOR LEASE | OFFICE SPACE

Cantey Hanger Plaza | 600 West 6th Street, | Fort Worth, Texas



LEASE RATE

\$25.00 RSF + ELEC

Building Size: 82,844 SF.

Building Information

- Ground Floor Availability
- Shell Space on the 2nd Floor
- On-site Security
- Protected Parking Garage
- Walking distance to Sundance Square
- Monument Signage Available
- Quick Access to I-30 & Chisholm Trail Tollway

Available Space

- SUITE 150 - 3,134 RSF. -Available 10/1/2018
- SUITE 175 - 4,104 RSF.
- SUITE 250 - 8,747 RSF.
- SUITE 300C - 4,100 RSF.

[FLOOR PLANS](#)

PROPERTY CONTACT

JACK A. CLARK	817.336.4002	JCLARK@ROREALTY.COM
STEPHANIE OLSON	817.336.4007	SOLSON@ROREALTY.COM
MAIN OFFICE	817.877.3300	ROREALTY.COM
FAX	817.877.3310	

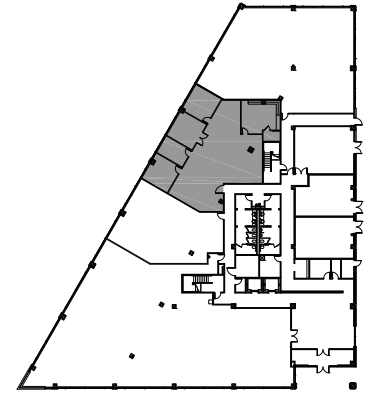
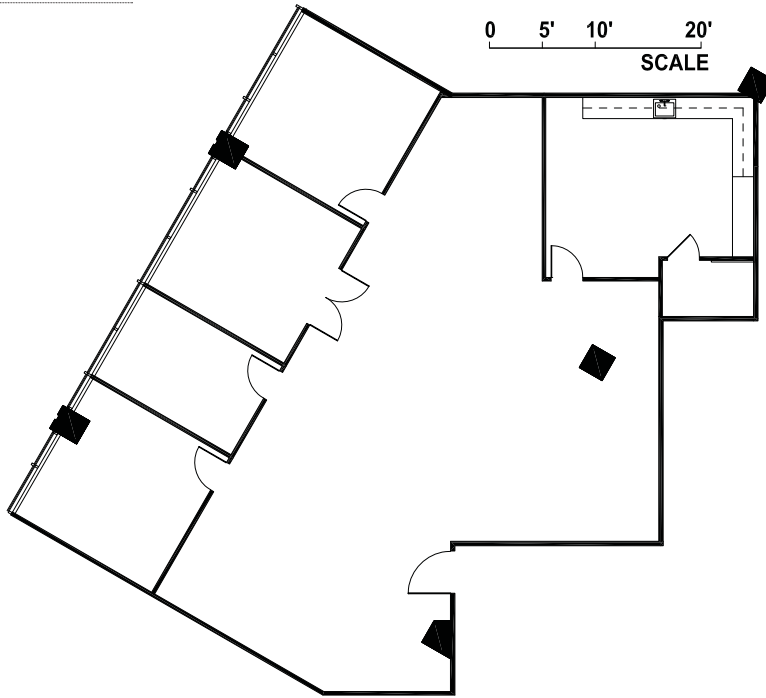
The information contained in this property flyer is deemed to be reliable. Every effort was made to obtain accurate and complete information; however no representation, warranty or guarantee, expressed or implied, may be made as to the accuracy or reliability of the information contained herein.



FOR LEASE | OFFICE SPACE

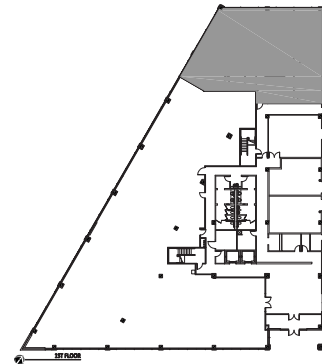
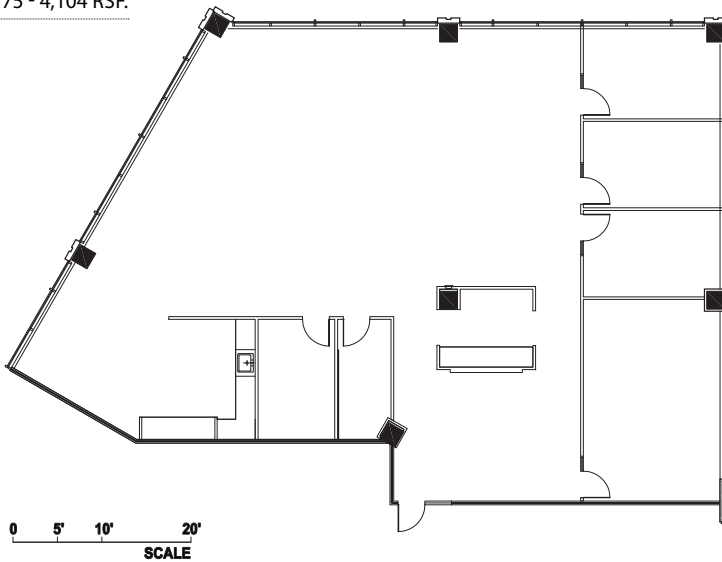
Cantey Hanger Plaza | 600 West 6th Street, | Fort Worth, Texas

SUITE 150 - 3,134



1ST FLOOR
KEY PLAN

SUITE 175 - 4,104 RSF.



PROPERTY CONTACT

JACK A. CLARK	817.336.4002	JCLARK@ROREALTY.COM
STEPHANIE OLSON	817.336.4007	SOLSON@ROREALTY.COM
MAIN OFFICE	817.877.3300	ROREALTY.COM
FAX	817.877.3310	