



FOR LEASE | OFFICE SPACE

First on 7th | Fort Worth, Texas

\$21.00 RSF + ELEC

LEASE RATE

Available Space

- Suite 200 - 21,583 RSF.
- Suite 400 - 10,438 RSF.
- Suite 534 - 2,094 RSF.
- Suite 700 - 3,051 RSF.
- Suite 827 - 1,061 RSF.
- Suite 1007 - 11,002 RSF.
- Suite 1235 - 894 RSF.
- Suite 1220 - 2,574 RSF.
- Suite 1300 - 10,956 RSF.
- Suite 1600 - 11,126 RSF.
- Suite 1729 - 843 RSF.
- Suite 1800 - 6,530 RSF.
- Suite 1802 - 4,867 RSF.
- Suite 1900 - 11,306 RSF.



Building Information

- | | |
|-------------------------------|---|
| • Retail and Office Space | • Walking distance to Sundance Square |
| • Excellent Views | • Quick access to I-30 & Chisholm Trail |
| • Protected Parking Garage | • Across the street from Burnett Park |
| • On-Site Security | • New Ground Floor Amenities |
| • On-Site Property Management | • 277,140 SF. Building |

FLOOR PLANS

PROPERTY CONTACT

JACK CLARK	817.336.4002	JCLARK@ROREALTY.COM
STEPHANIE GWIZDZ	817.336.4007	SGWIZDZ@ROREALTY.COM
MAIN OFFICE	817.877.3300	ROREALTY.COM
FAX	817.877.3310	

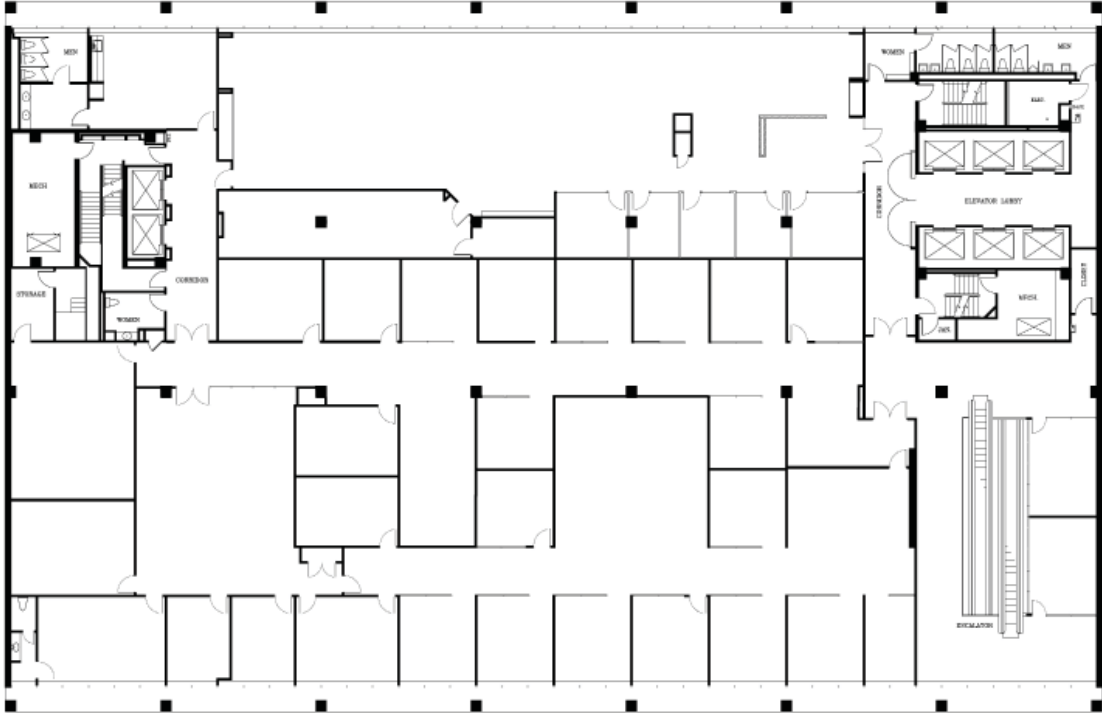
The information contained in this card is deemed to be reliable. Every effort was made to obtain accurate and complete information: however no representation, warranty or guarantee, expressed or implied, may be made as to the accuracy or reliability of the information contained herein.



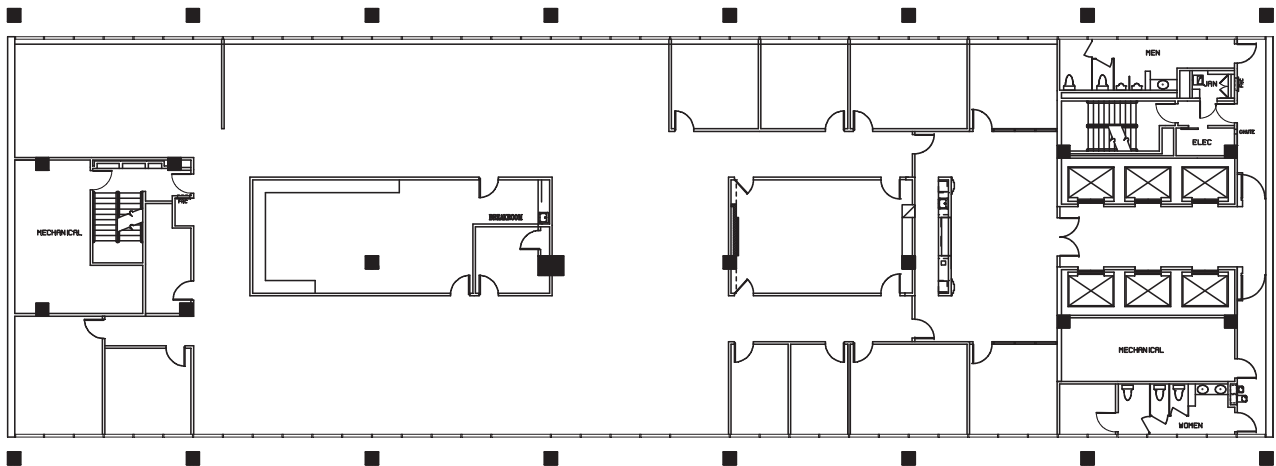
FOR LEASE | OFFICE SPACE

First on 7th | Fort Worth, Texas

SUITE 200 - 21,583 RSF.



SUITE 1300 - 10,956 RSF.



13TH FLOOR

PROPERTY CONTACT

JACK CLARK	817.336.4002	JCLARK@ROREALTY.COM
STEPHANIE GWIZDZ	817.336.4007	SGWIZDZ@ROREALTY.COM
MAIN OFFICE	817.877.3300	ROREALTY.COM
FAX	817.877.3310	

The information contained in this property flyer is deemed to be reliable. Every effort was made to obtain accurate and complete information: however no representation, warranty or guarantee, expressed or implied, may be made as to the accuracy or reliability of the information contained herein.