



FOR LEASE | OFFICE SPACE

500 W. 7th Street | Fort Worth, Texas



\$20.00 RSF + ELEC

LEASE RATE

Building Size: 277,140 SF.

Building Information

- Retail and Office Space
- Excellent Views
- Protected Parking Garage
- On-Site Security
- On-Site Property Management
- Walking distance to Sundance Square
- Quick access to I-30 & Chisholm Trail

Available Space

- LL170 - 3,741 RSF.
- Suite 200 - 21,583 RSF.
- Suite 700 - 3,051 RSF.
- Suite 1215 - 737 RSF.
- Suite 1217 - 807 RSF.
- Suite 1218 - 485 RSF.
- Suite 1300 - 10,956 RSF.
- Suite 1500 - 10,956 RSF.
- Suite 1701 - 493 RSF.
- Suite 1717 - 597 RSF.
- Suite 1702 - 1,489 RSF.
- Suite 1802 - 4,867 RSF.
- Suite 1900 - 11,306 RSF.

FLOOR PLANS

PROPERTY CONTACT

JACK CLARK	817.336.4002	JCLARK@ROREALTY.COM
STEPHANIE GWIZDZ	817.336.4007	SGWIZDZ@ROREALTY.COM
MAIN OFFICE	817.877.3300	ROREALTY.COM
FAX	817.877.3310	

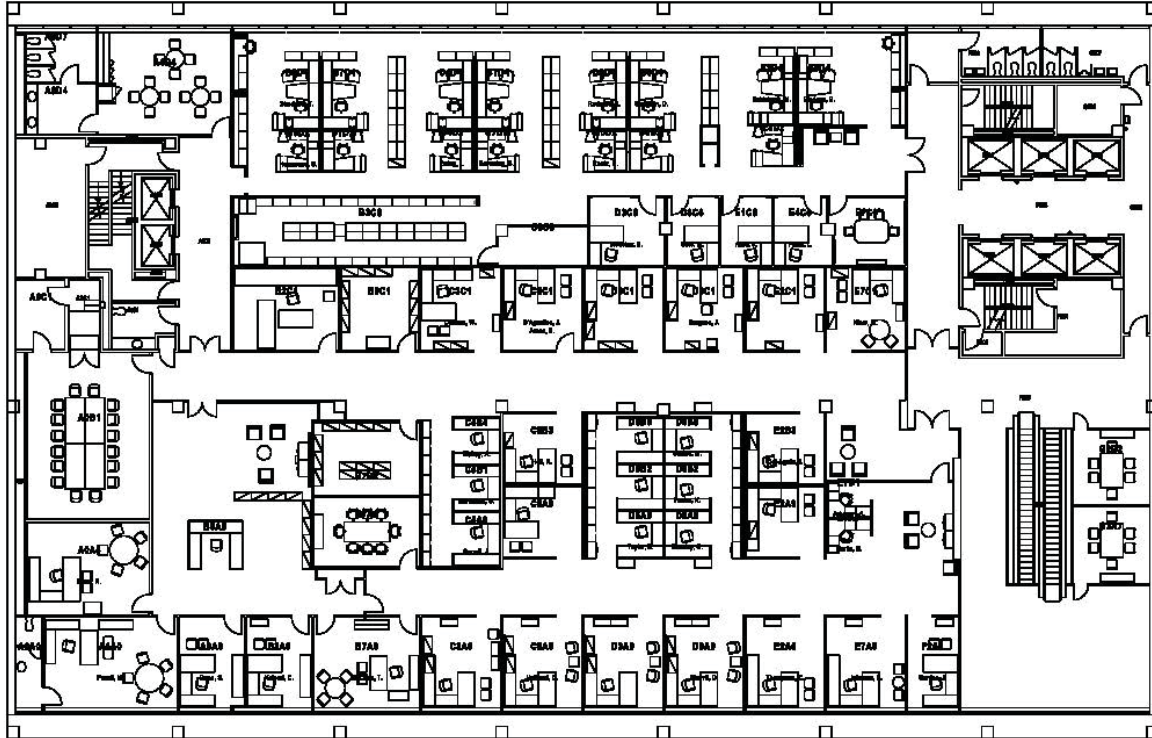
The information contained in this card is deemed to be reliable. Every effort was made to obtain accurate and complete information; however no representation, warranty or guarantee, expressed or implied, may be made as to the accuracy or reliability of the information contained herein.



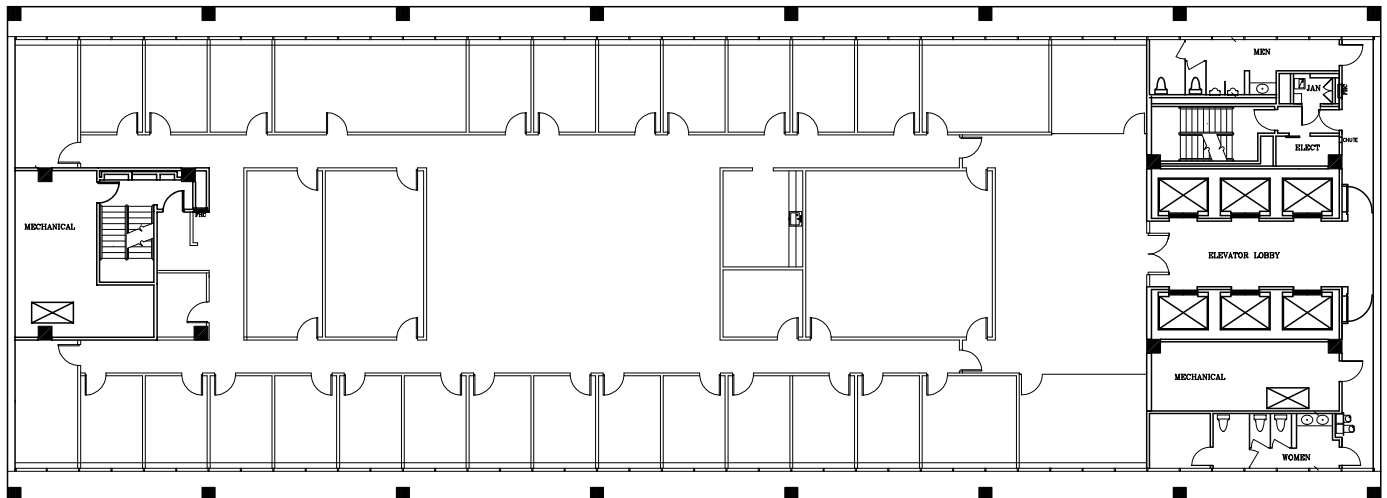
FOR LEASE | OFFICE SPACE

500 W. 7th Street | Fort Worth, Texas

SUITE 200 - 21,583 RSF.



SUITE 1500 - 10,956 RSF.



15TH FLOOR

PROPERTY CONTACT

JACK CLARK	817.336.4002	JCLARK@ROREALTY.COM
STEPHANIE GWIDZ	817.336.4007	SGWIDZ@ROREALTY.COM
MAIN OFFICE	817.877.3300	ROREALTY.COM
FAX	817.877.3310	

The information contained in this property flyer is deemed to be reliable. Every effort was made to obtain accurate and complete information; however no representation, warranty or guarantee, expressed or implied, may be made as to the accuracy or reliability of the information contained herein.