



FOR LEASE | OFFICE SPACE

First on 7th | Fort Worth, Texas



\$20.00 RSF + ELEC

LEASE RATE

Building Size: 277,140 SF.

Building Information

- Retail and Office Space
- Excellent Views
- Protected Parking Garage
- On-Site Security
- On-Site Property Management
- Walking distance to Sundance Square
- Quick access to I-30 & Chisholm Trail

Available Space

- LL170 - 3,741 RSF.
- Suite 200 - 21,583 RSF.
- Suite 550 - 995 RSF.
- Suite 700 - 3,051 RSF.
- Suite 1215 - 737 RSF.
- Suite 1217 - 807 RSF.
- Suite 1218 - 485 RSF.
- Suite 1235 - 894 RSF.
- Suite 1300 - 10,956 RSF.
- Suite 1500 - 10,956 RSF.
- Suite 1701 - 493 RSF.
- Suite 1717 - 597 RSF.
- Suite 1702 - 1,489 RSF.
- Suite 1802 - 4,867 RSF.
- Suite 1900 - 11,306 RSF.

[FLOOR PLANS](#)

PROPERTY CONTACT

| | | |
|------------------|--------------|----------------------|
| JACK CLARK | 817.336.4002 | JCLARK@ROREALTY.COM |
| STEPHANIE GWIZDZ | 817.336.4007 | SGWIZDZ@ROREALTY.COM |
| MAIN OFFICE | 817.877.3300 | ROREALTY.COM |
| FAX | 817.877.3310 | |

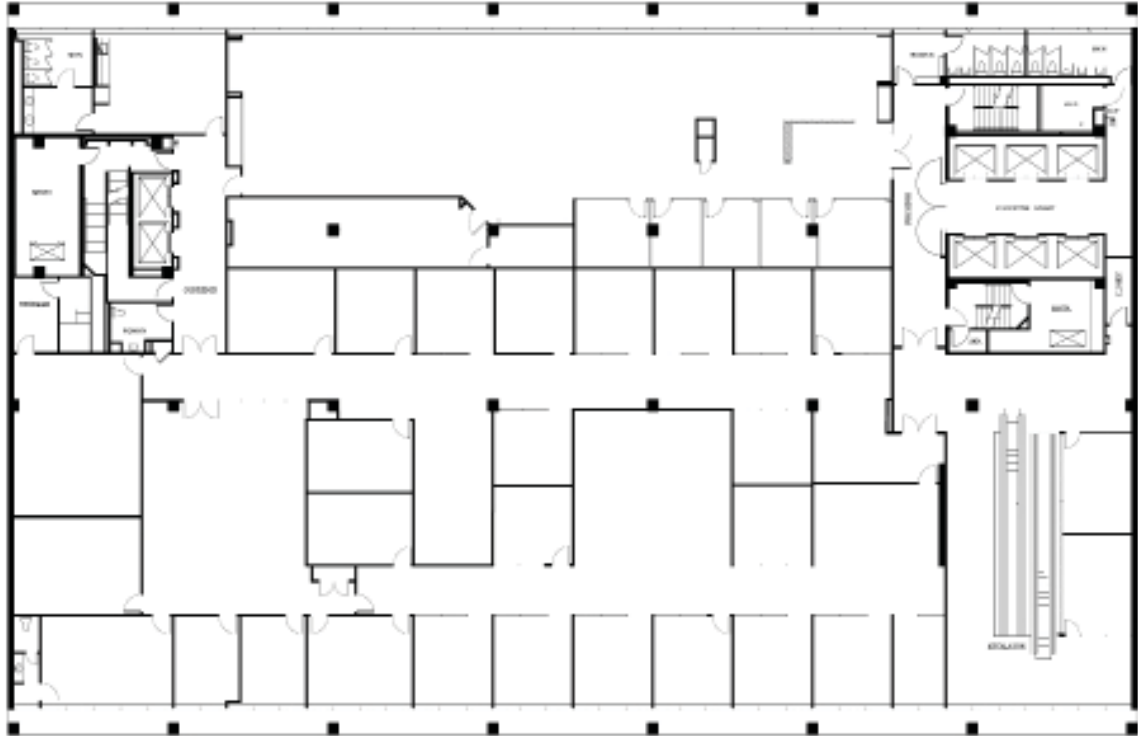
The information contained in this card is deemed to be reliable. Every effort was made to obtain accurate and complete information; however no representation, warranty or guarantee, expressed or implied, may be made as to the accuracy or reliability of the information contained herein.



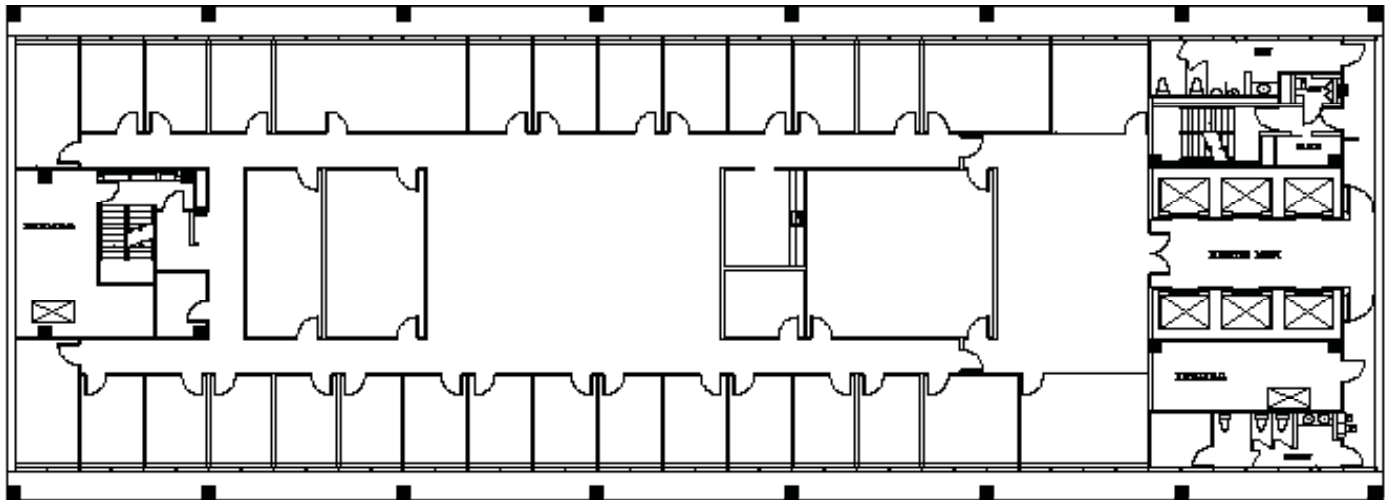
FOR LEASE | OFFICE SPACE

First on 7th | Fort Worth, Texas

SUITE 200 - 21,583 RSF.



SUITE 1500 - 10,956 RSF.



15TH FLOOR

PROPERTY CONTACT

| | | |
|-----------------|--------------|---------------------|
| JACK CLARK | 817.336.4002 | JCLARK@ROREALTY.COM |
| STEPHANIE GWIDZ | 817.336.4007 | SGWIDZ@ROREALTY.COM |
| MAIN OFFICE | 817.877.3300 | ROREALTY.COM |
| FAX | 817.877.3310 | |

The information contained in this property flyer is deemed to be reliable. Every effort was made to obtain accurate and complete information; however no representation, warranty or guarantee, expressed or implied, may be made as to the accuracy or reliability of the information contained herein.